

Instruction Manual



Car stereo MP3 player with PLL FM/AM stereo radio , DAB digital broadcasting, USB port, Micro SD card reader.



THANK YOU FOR PURCHASING OUR PRODUCTS.

After you receive the product, please read the installation instructions in order to better use the product and avoid damage caused by wrong operation, thank you!

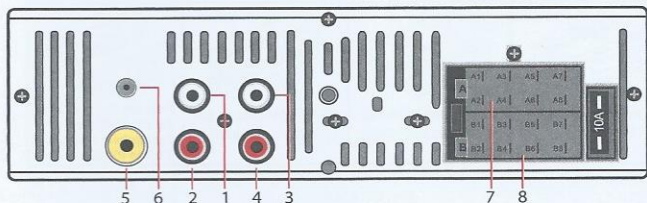
PRECAUTIONS BEFORE INSTALLATION

Thank you very much for purchasing and using our products. When you receive the product, please do not take it directly to the car for installation, because the product may affect the product after a long journey, please try the machine first And then install.

TEST METHOD:

Take the machine to the car's battery for test machine. Combine the red and yellow wires of the standard power cord of the machine together and connect it to the positive pole of the battery. The black wire of the power cord is connected to the negative pole of the battery. Wait 10 seconds, press each button of the machine to see if the machine can be turned on normally. If it can be turned on, it means that the machine is no problem. You can install it. If the test machine cannot be turned on normally, please confirm whether it is strictly in accordance with The steps of our test machine method to operate. If the problem is still not resolved, please contact our staff in time, thank you for your cooperation.

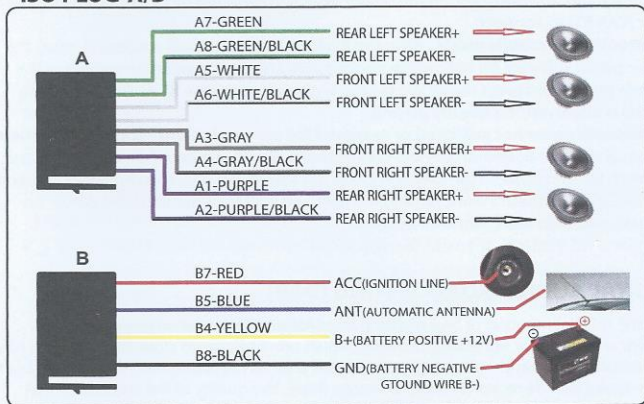
PRODUCT WIRING INSTRUCTIONS



1. FRONT LEFT OUTPUT
2. REAR LEFT OUTPUT
3. FRONT RIGHT OUTPUT
4. REAR RIGHT OUTPUT

5. RADIO ANTENNA
6. DAB DIGITAL ANTENNA
7. ISO PLUG-A(See below)
8. ISO PLUG-B(See below)

ISO PLUG-A/B

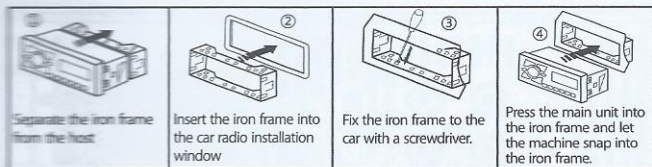


* When the yellow line B+ and the red line ACC have a 12V positive power at the same time, the unit can be turned on normally.

* The yellow line B+ keeps the power on and the machine has a memory function.

* 8 speaker cables, each cable can not be grounded, can not be shared, can not touch the line, otherwise there will be no sound output, output sound distortion, machine fever and so on.

INSTALLATION STEP DESCRIPTION



BLUETOOTH INSTRUCTIONS

Device Name: "CAR BT"

PIN Number: "0000" (If need)

Bluetooth connection method : When the machine is powered on, the phone turns on the Bluetooth function, click on the search device. When [CAR BT] is displayed in the list, click [CAR BT] to connect.

Bluetooth play mobile music : After the Bluetooth connection is successful, open the music player software on the mobile phone to play music, increase the volume of the mobile phone, and press the MODE button repeatedly until the BT AUDIO (Bluetooth mode) is displayed, it is already playing.

*** Bluetooth name not searched or searched for connection unsuccessful? Solution:**

Cancel all other Bluetooth devices connected to the phone, and then click again to search for the device. If the problem is still not solved, you can search/connect several times. If it still doesn't work, unplug the host and wait for 1 minute, then power on again, and then search for connections.

DIGITAL AUDIO BROADCASTING (DAB)

It is the third generation of broadcasting after AM and FM traditional analog broadcasting-digital signal broadcasting, which provides sound close to CD quality, has the advantages of anti-noise, anti-interference, anti-wave propagation fading, suitable for high-speed mobile reception, etc., to ensure fixed, the quality of the received signal when carrying and moving.

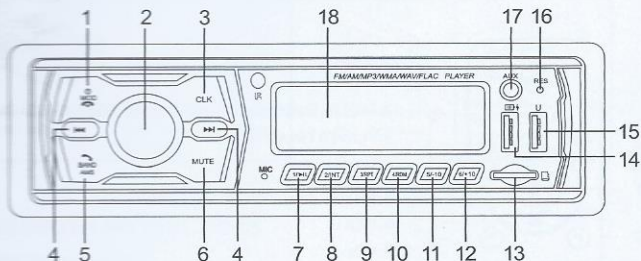
REMOTE CONTROL FUNCTION



NOTE:

1. Before using the remote control, please remove the battery insulation paper at the bottom of the remote control.
2. If the remote control does not work, please take the battery off and wipe it, then put it back, generally it can be used normally. Still not working, it may be that the remote control battery is low, please replace the remote control battery (CR2025).

OPERATING INSTRUCTIONS

**1. POWER/MOD/**

Short press turn on, long press three seconds turn off;

Push this button repeatedly and the lcd will display the following sequence:

RADIO → DAB → BT → USB → SD → AUX-IN.

In bluetooth mode, short press to End Calls.

2. VOLUME / SELECT CONTROL

Rotate the volume knob to control the volume ; Press the select button shortly until the desired function is shown on the display.

* SELECT (push down) : BASS → TREBLE → BALANCE → FADER → EQ (DSP-CLASSIC-POP-ROCK-EQ OFF) → LOUD (on/off) → AUTO (colorful switch : White-purple-cyan-blue-yellow-red-green-auto) → STEREO(mono).

3. CLK(Clock settings)

CLK (short press) → CLK (long press) → Setting hours (Rotate the volume knob) → Confirm hours(short press CLK or VOL) → Setting minutes (Rotate the volume knob) → Confirm minutes(short press CLK or VOL).

4. <</>> BUTTON

In playback mode, it is the function of the previous and next song ;

In radio mode, it is a function to search for radio stations backward and forward.

5. BAND /AMS/

In radio mode, press the Band to browser station, long press to automatically search for and store radio stations;

In playback mode, short press AMS and rotate the volume knob to choose the song, and then long press AMS to confirm it.

In bluetooth mode, short press to Answer Calls.

6. MUTE BUTTON

Press it, all the sounds are quiet. Press it again and the sound restore.

7. 1/II BUTTON

In radio mode, short press to go to the pre-stored radio station No.1. long press to store the current frequency in radio station No.1;

In playback mode, it is play/pause.

8. 2/INT BUTTON

In radio mode, short press to go to the pre-stored radio station No. 2, long press to store the current frequency in radio station No. 2;

In the playback mode, short press to open the INT function, 10 seconds before browsing each song, press again to close the INT function.

9. 3/RPT BUTTON

In radio mode, short press to go to the pre-stored radio station No.3, long press to store the current frequency in radio station No.3;

In playback mode, short press to turn on the RPT function, repeat the current song, and press again to turn off the RPT function.

10. 4/RDM BUTTON

In radio mode, short press to go to the pre-stored radio station No.4, long press to store the current frequency in radio station No.4;

In playback mode, short press to turn on the RDM function, play a song at random, and press again to turn off the RDM function.

11. 5/-10 BUTTON

In radio mode, short press to go to the pre-stored radio station No. 5, long press to store the current frequency in radio station No. 5;

In playback mode, short press to play the first 10 songs, and long press to play the song in the previous folder.

12. 6/+10 BUTTON

In radio mode, short press to go to the pre-stored station No. 6, long press to store the current frequency in station No. 6;

In playback mode, short press to play the next 10 songs, and long press to play the next folder.

13. MICRO SD CARD SLOT

Insert the MICRO SD card in the slot by pushing it gently inward. Select SD with the mode selector. The music starts to play automatically.

14. USB CHARGING HOLE

Plug in the data cable to charge for mobile devices with 5V/1A .

15. USB READING HOLE

Insert the USB device in the slot , The music starts to play automatically.

16. RESET BUTTON

Press to restore to factory settings.

17. AUX IN JACK

Insert your portable player into the jack, in any playing mode, audio will come through the car speaker.

18. LCD DISPLAY

The LCD display show the actual reception and function.

COMMON PROBLEMS AND SOLUTIONS

Q: My original car plug is inconsistent with the new unit plug. How to wire it?

A: There is a lossless line. The new unit tail line and the lossless line are the same color. It is not connected to the color. After plugging it, insert one end into the original car plug, insert one end into the unit, and the original car plug line is normal. The unit will work properly. If there is no lossless line, you must distinguish the function of each line on the original car plug. Refer the wiring diagram on the top of the machine cover, and wire the corresponding function of each line on the new machine. Do not put the new machine. The line is connected to the original car plug wire by color.

Q: I have connected the line, but the unit is not powered, can't boot?

A: Check if the fuse on the unit is blown. Put the red line of the new unit together with the yellow line and take it to the positive side of the car battery. The black wire of the new unit is connected to the negative pole of the battery. Press the unit start button, if the unit can be turned on normally, indicating that there is no problem with the unit. This requires checking the circuit on the original car plug. Generally, the red line or the yellow line of the new unit does not come over.

Q: After the line is connected, the unit can be turned on, but there is no sound or the sound is small or intermittent. What is the reason?

A: The unit has four color lines of white, gray, green and purple. The two wires of each color are connected to one speaker. Several speakers are connected to each other. No one needs to be connected, and it is empty. If the above phenomenon occurs, the possible reason is that the speaker cable of the original plug is not distinguished when the wiring is connected. The two wires of one speaker are not connected to the same color line, or the speaker cable has a ground/wire. You can take off the speaker cables and find a speaker from the outside. Each color is tested separately and whether there are any problems.

Q: The unit can be turned on and working normally, but every time you start the car, you have to turn it on manually, and the time and playback status are not remembered. What is the reason?

A: In this case, the red line of the new unit tail line is reversed with the yellow line, and the two lines can be reversed and connected. If the time, the radio has a memory, can not remember when playing the USB flash drive, this phenomenon is that the power-on reset time of this USB flash drive is too long, the unit does not detect the U disk when booting the U disk, so the memory is not Live, replace the USB flash drive of other brands can be solved.

Q: The unit can boot normally, but does not read the memory card or USB flash drive?

A: This phenomenon is generally incompatible with the memory card or the file format inside the USB flash drive. Please format the memory card or USB flash drive on the computer. The system format is: FAT32, and re-download the MP3 song for playback.

Q: I have a subwoofer, After the connection, the subwoofer does not ring, What is the reason?

A: The unit provides an audio for the subwoofer. The interface is the red/white lotus jack on the back of the unit. If the subwoofer has no sound after the connection, please pull out the subwoofer cable plug and touch the connector wire core position of the cable. If the subwoofer is normal, it will ring. If it does not ring, please check Power and settings on the cable or subwoofer. Some subwoofers with FM and Bluetooth function. When using the audio function of the unit, please set the mode of the subwoofer to AUX mode.